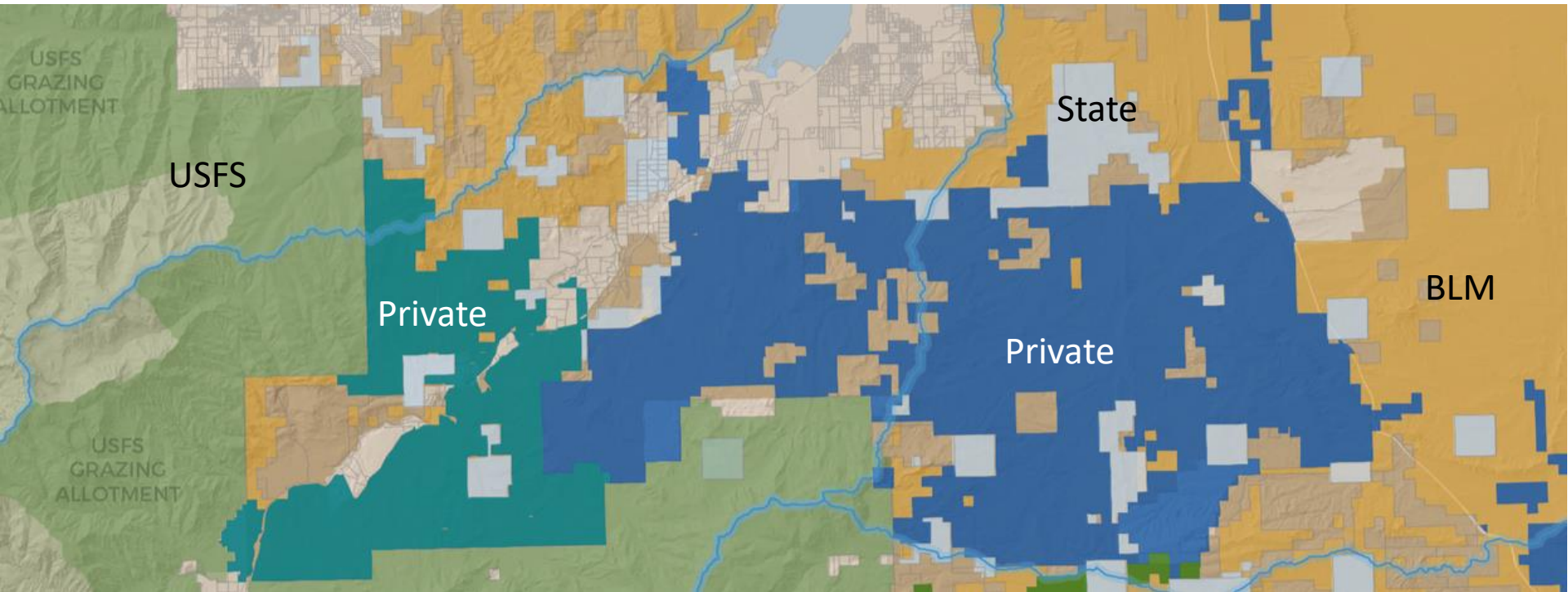


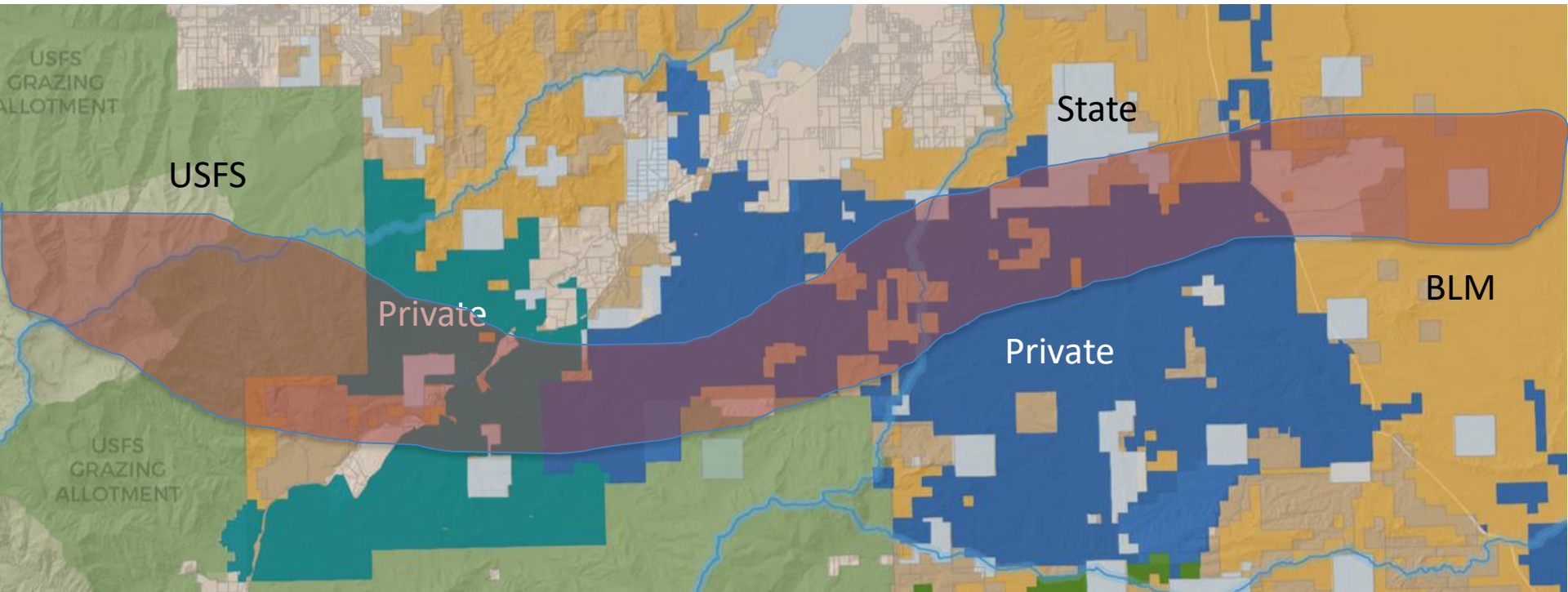
Western Landscape



Intermingled public and private lands

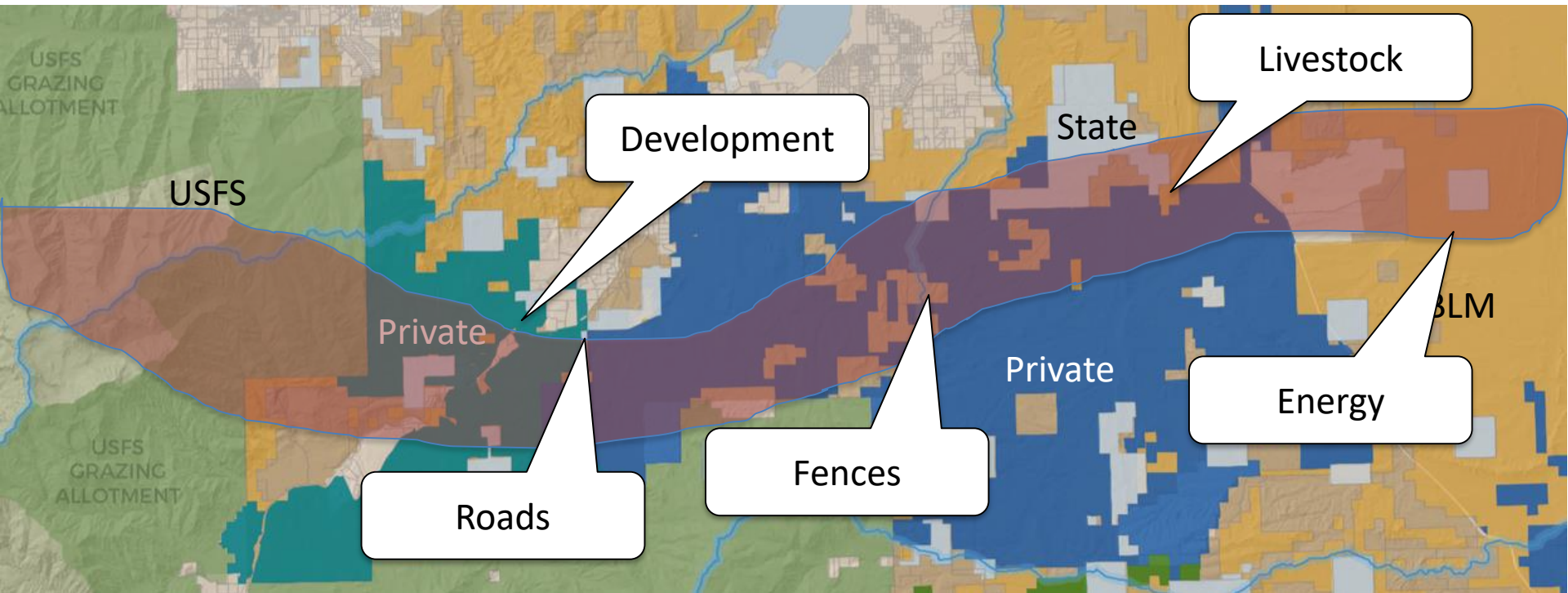


A wildlife corridor is identified



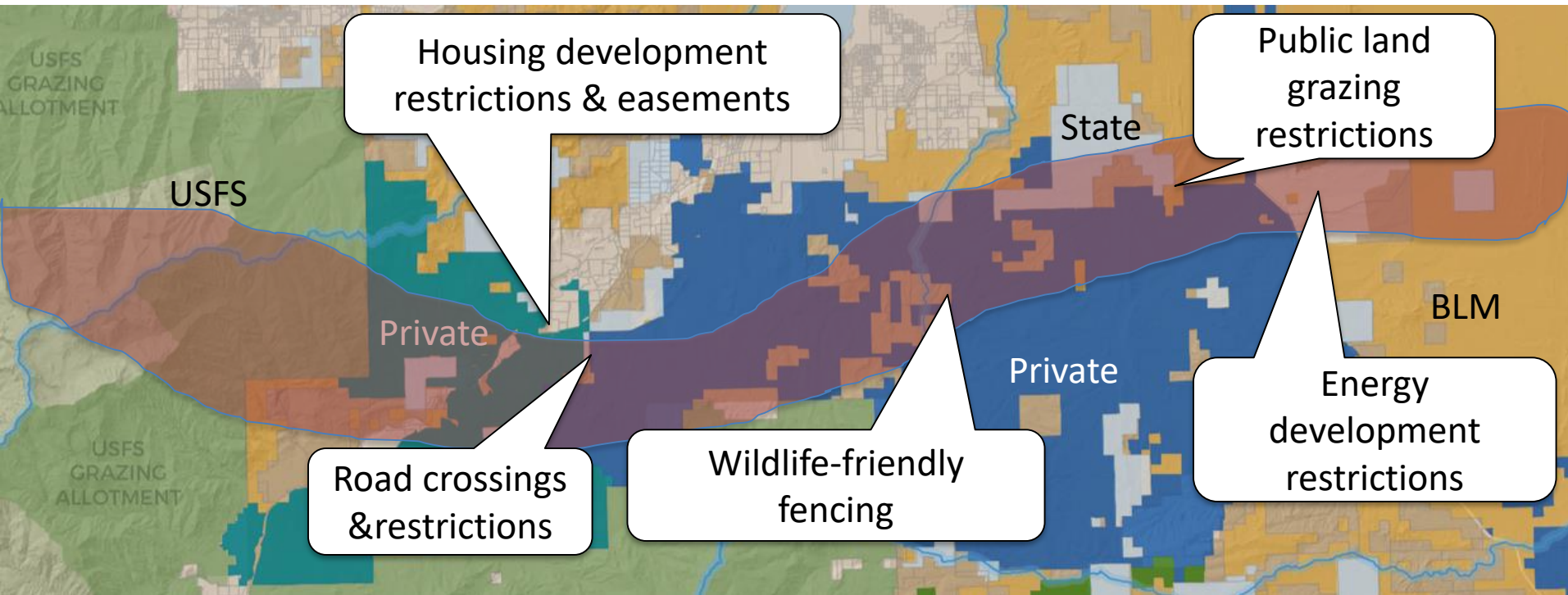
Process led by scientists, NGOs, government agencies

Threats to the corridor are identified



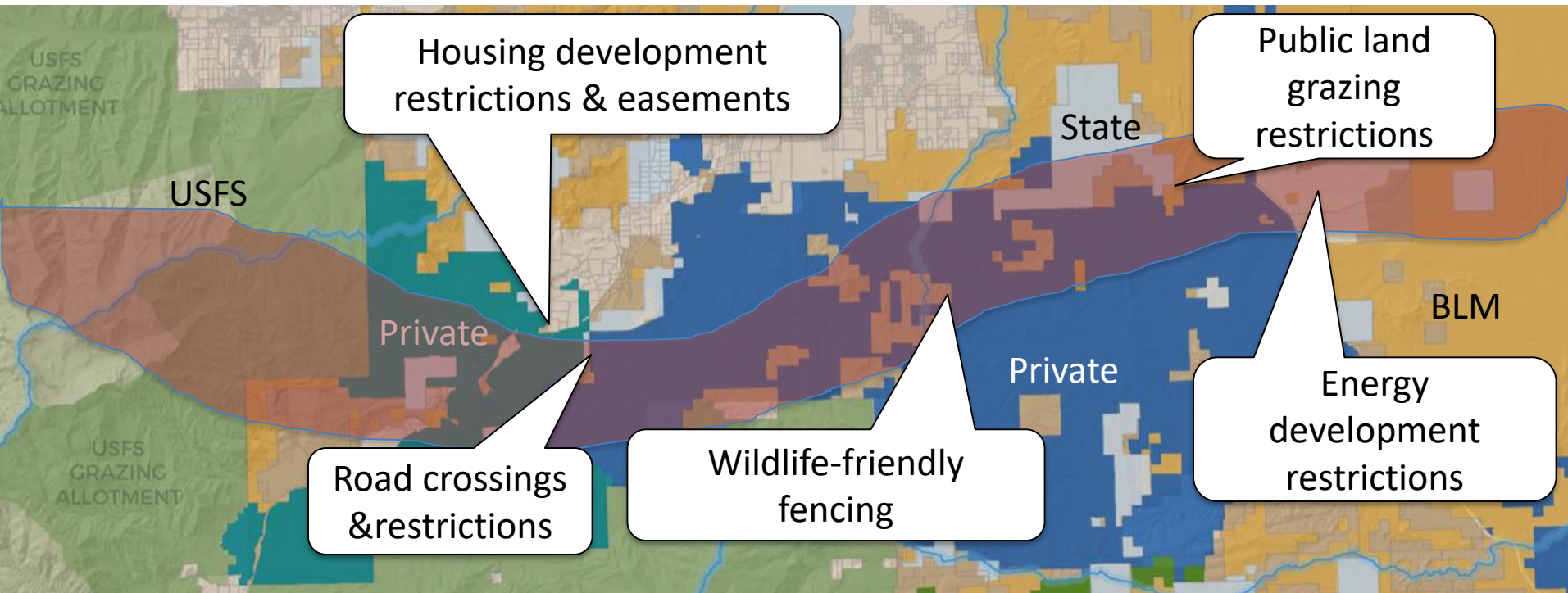
Process led by scientists, NGOs, government agencies

Plans proposed to protect corridor



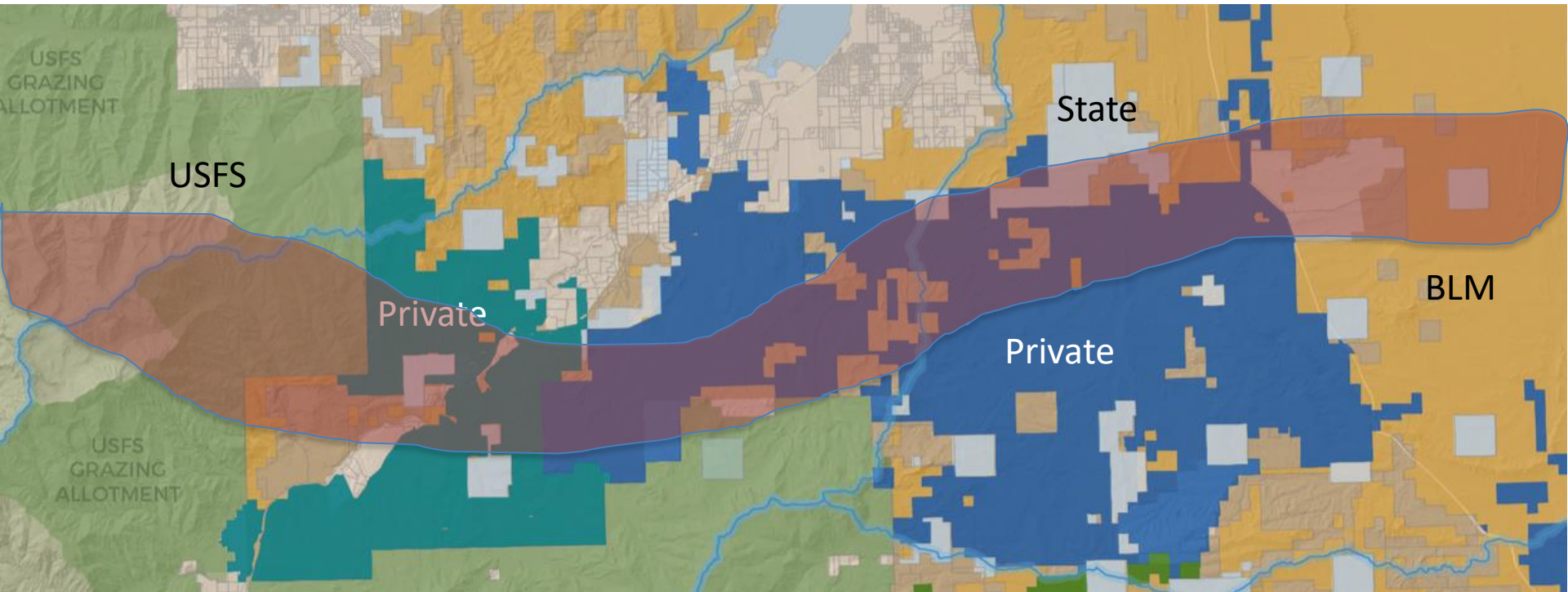
Process led by NGOs, government agencies

Plans presented to the public for comment



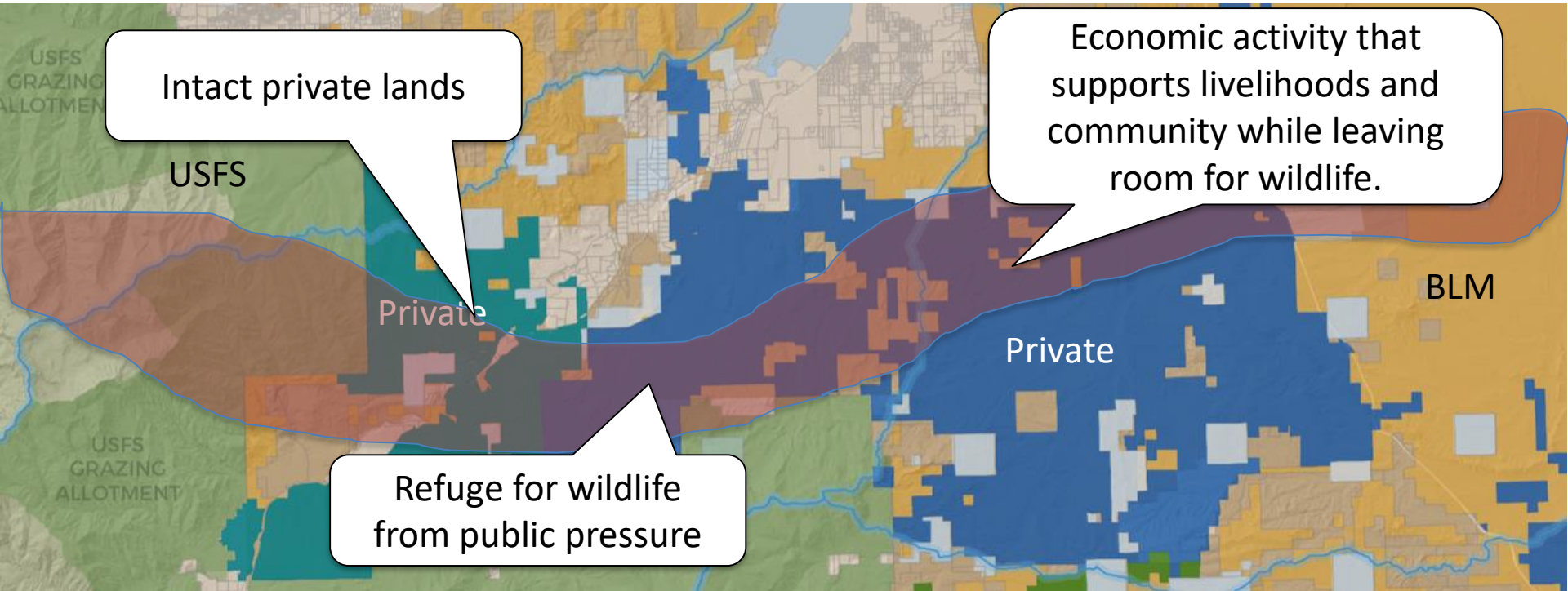
- Local, state or federal land use restrictions proposed
- Need for funding for easements and wildlife-friendly fencing stated (but often unrealized)
- Ranchers and energy industry protest

What if instead...

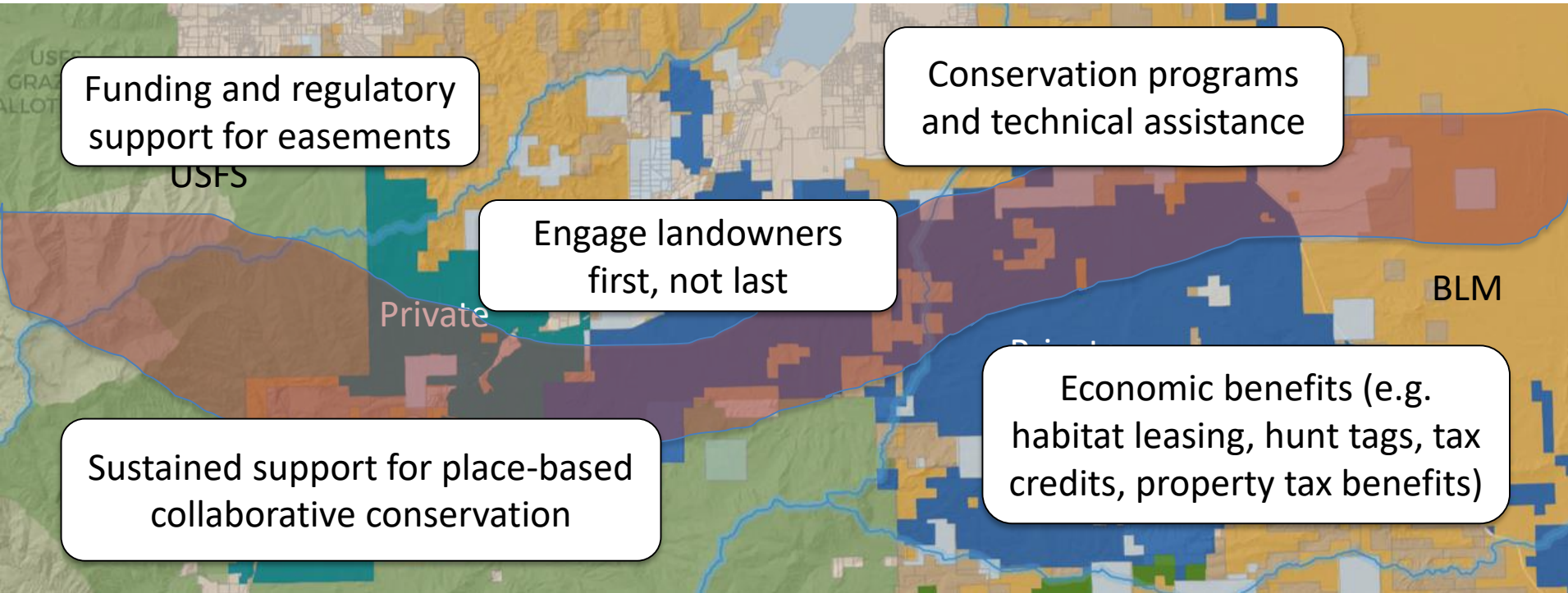


we start by identifying why wildlife have chosen this path?

What is going right here?



How can we support what's working?



What is needed to keep these private lands intact, economically viable and available to support both people and wildlife?